

Get more value
from your analytics

Usecasehub is an all-new software platform specifically designed to maximize the value your enterprise realizes from analytics

Increase enterprise analytics project success - Usecasehub provides the clarity, energy and synergy needed to realize the full potential of the analytics lifecycle.



Track Lifecycles

Optimized analytics requires mature portfolio governance. Start managing your entire analytics function at the program level, easily and intelligently



Exploit Knowledge

Start retaining analytics knowledge in your "corporate memory" with a simple and efficient system for building analytics knowledge over time



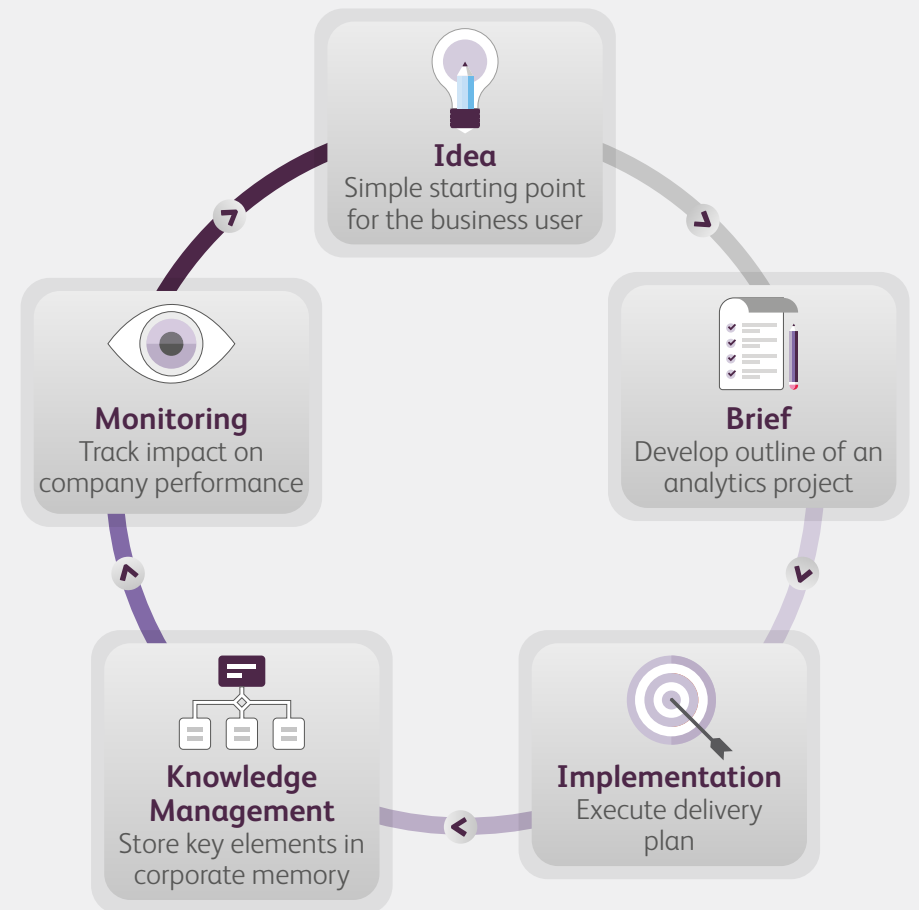
Create Impact

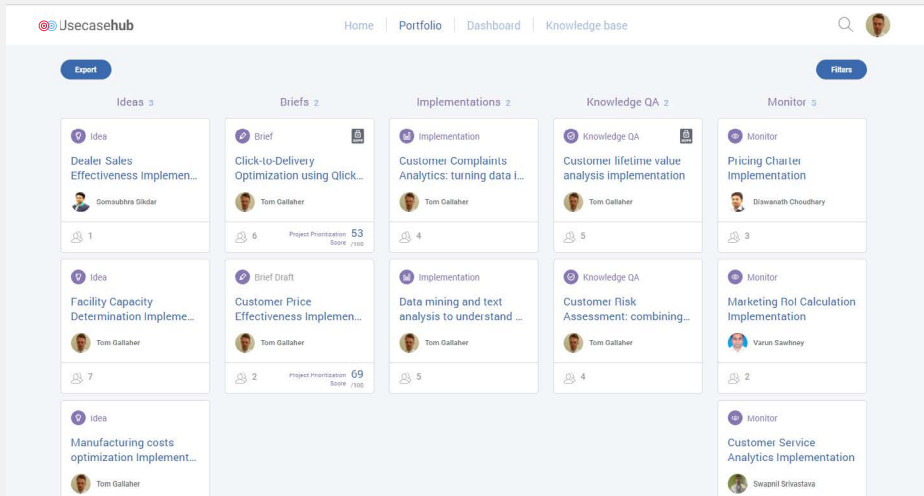
When the business context is clearly understood, data teams achieve better results. Usecasehub optimizes the exchange between your data team and other stakeholders

Overall, Usecasehub lets you take control of your analytics portfolio and accomplish the dual goals of increasing analytics maturity and converting this into increased company performance

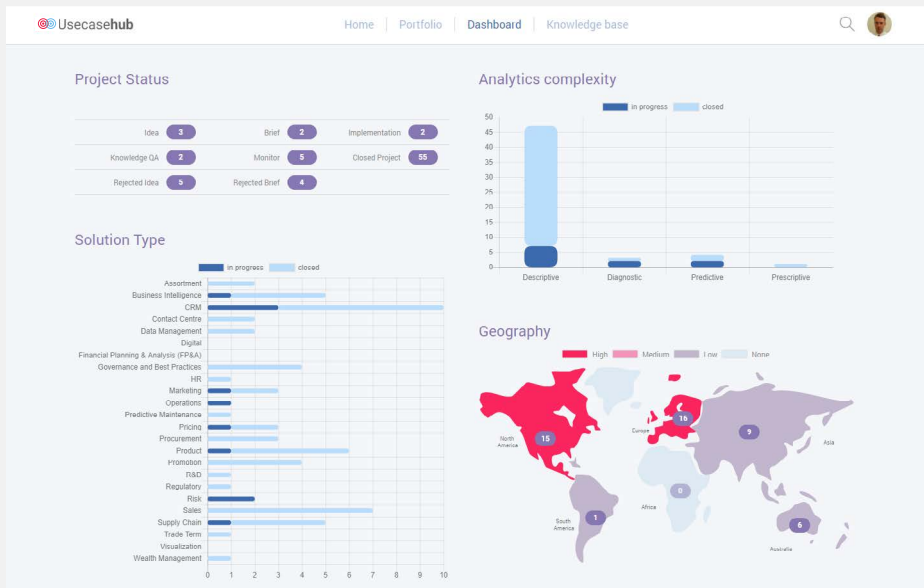
How it works

Usecasehub uses its proprietary analytics project framework to track your analytics projects throughout their lifecycle. As a project progresses, the information recorded on its card becomes fuller and more detailed as different teams and individuals add their input and the results of their work.





Managing the analytics project portfolio across five lifecycle stages in Usecasehub



Viewing graphically visualized metrics in Usecasehub's the portfolio dashboard

Why choose Usecasehub?

Ask the right questions

Capture analytics ideas from anywhere in the organization – then choose the best projects to take forward

Take back control

Establish strong governance and clear visibility across the whole project lifecycle, not just during delivery

Measure added value

Gauge the benefits of analytics projects against predictions and sharpen up your knowledge management processes

Analytics for your analytics

See how analytics is working across your organization with macro-level metrics on complexity, geography, solution type and more

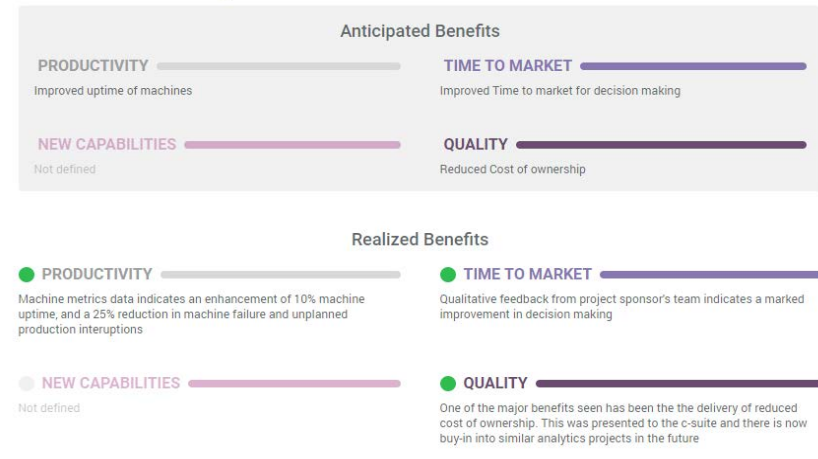
Make knowledge work

Allow governance to become the workhorse of knowledge management creating an asset the whole organization can exploit

Accelerate GDPR compliance

Use out-of-the-box risk assessment tools to make sure exposure is identified before processing begins

Benefits Monitoring



Performance culture: comparing anticipated and realized benefits from an analytics project in Usecasehub



Arrange a demo

To arrange a demonstration of Usecasehub and see its benefits for yourself, contact us on the email address below.

Evaluesserve at a glance

Evaluesserve is a global professional services provider offering research, analytics, and data management services. We are powered by mind+machine™ – a unique combination of human expertise and best-in-class technologies that use smart algorithms to simplify key tasks. This approach enables us to design and manage processes that can generate and harness insights on a large scale, significantly cutting costs and timescales and helping businesses that partner with us overtake the competition.

We work with clients across a wide range of industries and business functions, helping them to make better decisions faster; reach new levels of efficiency and effectiveness; and see a tangible impact on their top and bottom line.

Usecasehub support: usecasehubHelpdesk@evaluesserve.com
www.evaluesserve.com

Evaluesserve – powered by mind+machine™